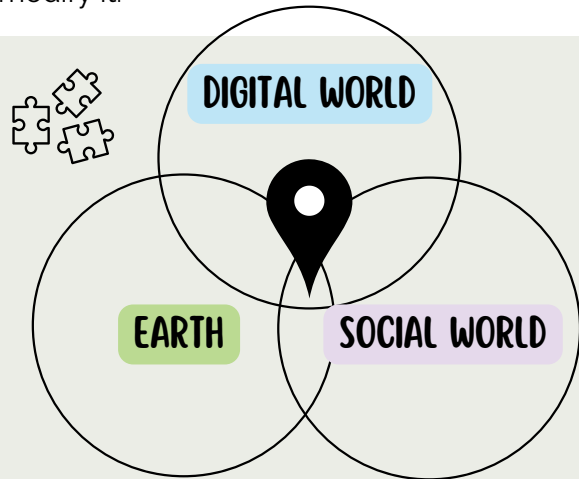


(i) This guide serves to support you, not provide the limits to your imagination. Please feel free to add to or modify it.

DIGITAL POSITIONALITY AS A TOOL

Picture the world as a puzzle with three interconnected dimensions: the Earth, the Social World, and the Digital World. Each dimension adds unique puzzle pieces to your digital positionality, influencing how you perceive and interact with the world.



STEP 1: EXPLORE YOUR ENVIRONMENT

Begin by reflecting on your position in each dimension. Think about how the following puzzle pieces apply to your life. Note down what comes to mind on the color-fitting sticky note.

Task Example: If I choose the Earth Dimension (green sticky note) and the Puzzle Piece "Geographic Location." I'll write down what comes to mind: "Rural area on outskirts of XYZ."

EARTH

Consider where you usually are - city, town, or rural area. Think about the advantages and challenges of your natural surroundings, climate, and ecosystems.

- ✚ **Geographic Location:** Where do you live and work? ...
- ✚ **Natural Living Environment:** Which flora, fauna, and landscapes are surrounding you? ...
- ✚ **Climate and Ecosystems:** How does the climate and ecosystems affect your daily life? Are there certain resources your region depends on? ...

SOCIAL WORLD

Contemplate your culture, society & their influence on your opportunities. Think about how your identity could shape your interactions with the world.

- ✚ **Cultural Background and Social Living Environment:** Which society are you a part of? What norms or attitudes do you live by? Which institutions or relationships shape your life? ...
- ✚ **Socioeconomic Position:** How much Economic (money), Social (relationships), or Cultural Capital (education) do you have? How do you "behave" in your society? What is your sense of belonging? How easy is it for you to take on new opportunities? ...
- ✚ **Social Identity and Positionality:** What is your Race, Gender, Sexuality, Ethnicity, or Ability (physical or mental)? What kinds of obstacles do you encounter because of your identities? What relative privileges do you hold due to your identities? How do you perceive the world as a result of your identities? ...

DIGITAL WORLD

Reflect on your digital tools—smartphones, computers, and internet usage. Consider your access, comfort in using them, and their impact on your life.

- ✚ **Digital Capital:** Do you have easy access to technologies? Can you use them confidently? How do digital tools impact your daily life and what can or can't you do because of them? ...
- ✚ **Cloud Geography:** Where is your data located? Who has control over your data? What websites do you have access to? Are there areas of computation you're excluded from, like certain websites or platforms? ...
- ✚ **Algorithmic Bias, Personalization, and Targeting:** What content do you encounter online? How is the design of your online environment tailored to your preferences? How does this shape your digital experiences? ...



STEP 2: UNDERSTANDING THE CONNECTIONS BETWEEN THE PIECES

In this step, let's dig deeper into how specific elements shape your digital experiences—how your puzzle pieces fit together to create advantages and challenges for you in the digital age.

Task Example: Suppose I live in a rural area (Earth) with limited internet access, I sometimes miss out on online education opportunities (Digital World), translating into disadvantages (Social World). As you visualize these connections, draw arrows from one sticky note to the next and jot down the specific interrelations, like "limited internet access."

EARTH

- ✦ **Geographic Location:** How does where you live influence your access to digital resources and technology? How does your location present unique challenges or benefits regarding technology use and your role in society? ...
- ✦ **Natural Living Environment:** How does the surrounding environment affect your digital interactions? Are there links between the natural world and the technology or society you engage with? How do these connections shape your experiences? ...
- ✦ **Climate and Ecosystems:** Have climate conditions or reliance on certain ecosystems affected your ability to connect digitally? How does this affect the way you experience the online and social world? Can you draw connections between your environment and your online presence? ...

SOCIAL WORLD

- ✦ **Cultural Background and Social Living Environment:** How does your unique culture and society shape your digital interactions and experiences? Are there aspects of your identities within society that impact your digital presence? ...
- ✦ **Socioeconomic Position:** Consider your access to economic, social, and cultural resources. How does your socioeconomic position influence your digital participation and the opportunities available to you in the digital world? How are these connections between your social status and your digital experiences? ...
- ✦ **Social Identity and Positionality:** Have you encountered obstacles or advantages in the digital space based on factors like your sexuality, gender, race, or mental or physical ability? How do your social identities affect the way you perceive and navigate the online world? How are these aspects intertwined with your society and environment? ...

DIGITAL WORLD

- ✦ **Digital Capital:** Reflect on your access to digital tools and skills. How proficient are you in using technology, and do you feel empowered to fully participate in the digital world? What makes you feel that way - what are the connections to the other puzzle pieces? What are possible barriers to improving your access to digital tools and your skills in using them? ...
- ✦ **Cloud Geography:** Consider the location of your data and who has control over it. How does this impact your privacy and access to online services? Is this shaped by your society? Can you identify areas of the internet (like websites or knowledge bases) you're excluded from based on your location on Earth? ...
- ✦ **Algorithmic Bias, Personalization, and Targeting:** How does the content you encounter online relate to your identities? Have you ever noticed any biases in the algorithms that determine what you see, and how does this impact your digital experience? How do these biases relate to your society, location, and the way you engage with the world around you? ...



STEP 3: RE-COGNIZE HISTORICAL IMPACT

Consider the historical exploitation that created uneven and inequitable structures across all three dimensions. Let's dive deeper into the historical factors that have shaped the connections you established in step 2. Draw ∞, wherever you notice the ongoing impact of historical exploitation, and make a short note on your chart paper.

You are invited—no matter how much you currently know about theories and history—to start reflecting on examples of inequitable structures from the past that still persist today.

You'll find examples for such insights below:

EARTH

Reflect on how human history has shaped your physical environment and the resources available in your region.

Consider events, like colonization or resource extraction for economic growth, that result in lasting imbalances. How did these events lead to a surplus of resources and wealth, like the development of "climate-friendly" infrastructure? Alternatively, has your Earth environment suffered from the consequences of exploitation, such as climate-damaging waste deposits or resource extraction sites? ...

SOCIAL WORLD

Consider how your society has treated different social groups and how it reproduces the structures over time.

Historical in-equities and the legacies of colonialism, racism, sexism, ableism, xeno-phobia, homophobia, religious and other forms of discrimination still affect us today as we navigate living within present day capitalism. Reflect on how your own societal background and identities are shaped by the past. How have historical structures affected the opportunities available to you or the obstacles you may have encountered, perpetuated through things like national borders, or institutional biases in education and government? ...

DIGITAL WORLD

Think about the historical factors that have contributed to disparities in digital access and resources.

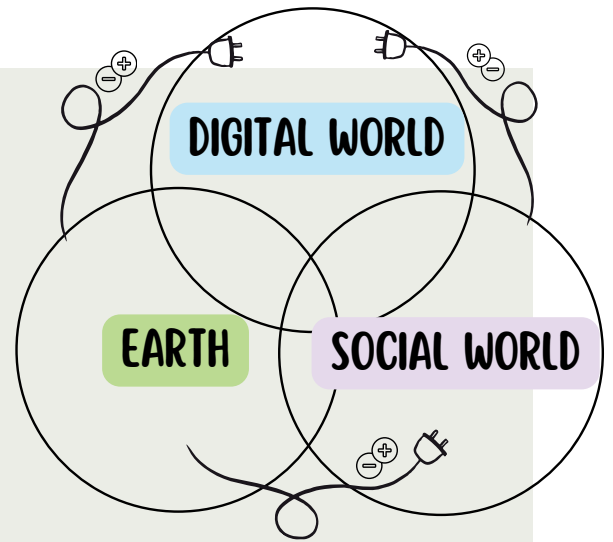
How are certain groups historically excluded from technological advancements or opportunities? How might these historical events continue to impact digital access, tools, and infrastructural design in the present? ...

DIGITAL POSITIONALITY AS A LENS

Digital Positionality is a key to understanding how your digital actions connect to the physical world (Earth) and societal structures (Social World). It's a special lens that reveals these important links between the dimensions. You'll start to see how your **choices** impact the environment and different social groups.

Think about your phone. It would not be in your hands without the countless workers training the algorithms and the software. And this wouldn't be possible without people extracting resources from the Earth to assemble the parts of your phone.

This awareness encourages us to challenge historically ongoing exploitation. Digital Positionality empowers us to **imagine a future where progress and equity align**, and enables us to rethink our role in this complex system. Recognizing the power you hold to build an equitable and sustainable digital future starts **from the bottom-up** and is strengthened through **collaboration** with others.



ARCHITECTING THE FUTURE

Let's shift gears and begin to generate new ideas and potential wishes you want to see in policy and within your individual conversations and personal sphere.

- If you could change anything, what would you change?
- Think about the (infra)structures you encounter daily and the puzzle pieces that work together to shape our lives. What aspects would you like to see more of, or perhaps less of, to make current (infra)structures better for everyone?
- Consider how your changes could positively impact different groups or individuals: Who stands to benefit from your ideas?

Take Notes

COPYRIGHT AND USAGE INFORMATION

© 2023 Anna L. Menne, Makēda Gershenson, Alissa T. Steer

This work is freely available for non-commercial use, adaptation, and distribution with proper attribution. Commercial use is not permitted without express permission from the copyright holders.

Users are welcome to:

- Use and share this work for educational and research purposes
- Adapt and build upon this work
- Distribute modified versions

Provided that:

- The original creators are credited
- The work and any derivatives are not used for commercial purposes
- Any modifications are clearly indicated

When using or referencing this work, please cite:

Menne, A. L., Gershenson, M., & Steer, A. T. (2023). Workshop Guide. Digital Positionality Project. Retrieved from <https://www.digitalpositionality.com/resources>

PROJECT INFORMATION

This guide is an output of the X-Tutorial project:

"Digital Positionality: Designing a Qualitative Map Toward Epistemic Justice from the Bottom-Up"

Lead by Anna Lena Menne

Project Duration: November 2022 - November 2023

Funded under the Excellence Strategy of the Federal Government and the Länder by the Berlin University Alliance



Berlin University Alliance

Gefördert im Rahmen der
Exzellenzstrategie von Bund und
Ländern durch die Berlin University Alliance

